

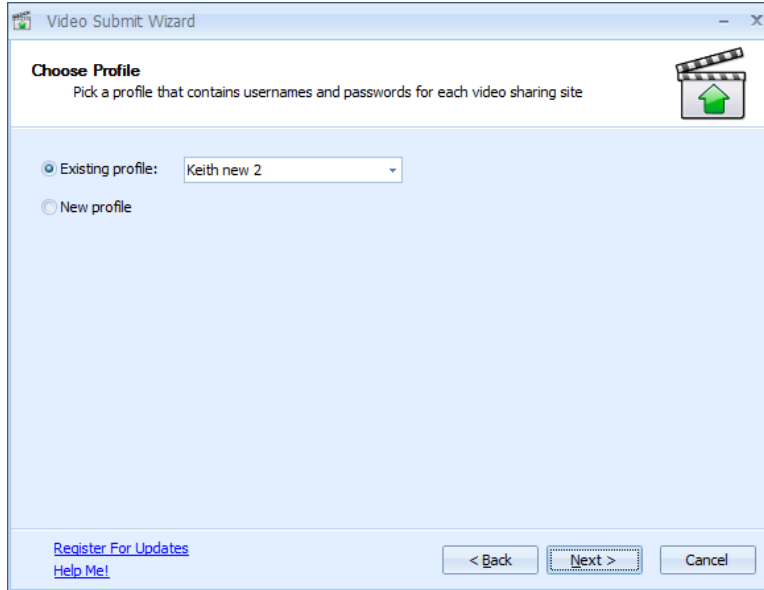
# Video Submit Wizard Tutorial



[www.VideoSubmitWizard.com](http://www.VideoSubmitWizard.com)

1. On the "Choose Profile" step, you will either create a new profile or choose an existing one.

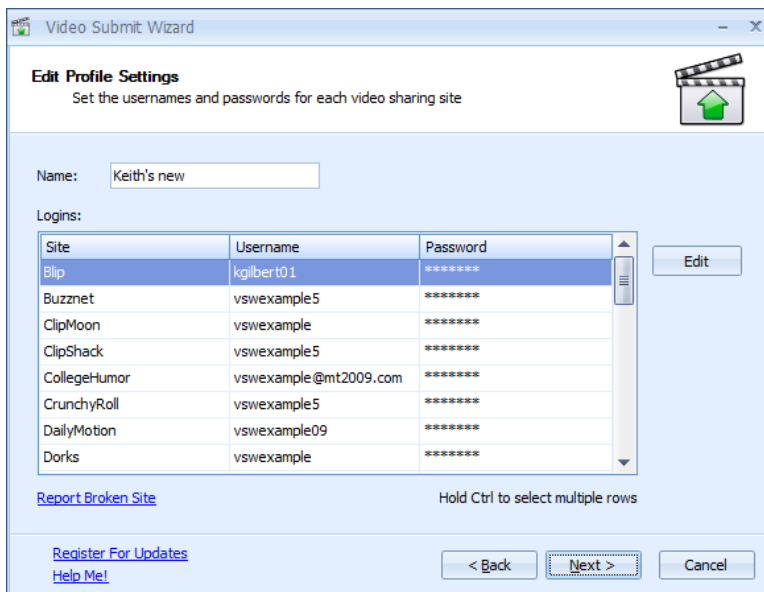
Each "profile" holds username and password information for each video sharing site.



2. On the "Edit Profile Settings" step, you'll enter a username and password for each video sharing site.

To go to a site to sign up, simply double-click its listing.

If you want, you can easily outsource account creation for these sites by hiring someone from [www.rentacoder.com](http://www.rentacoder.com) or [www.elance.com](http://www.elance.com).



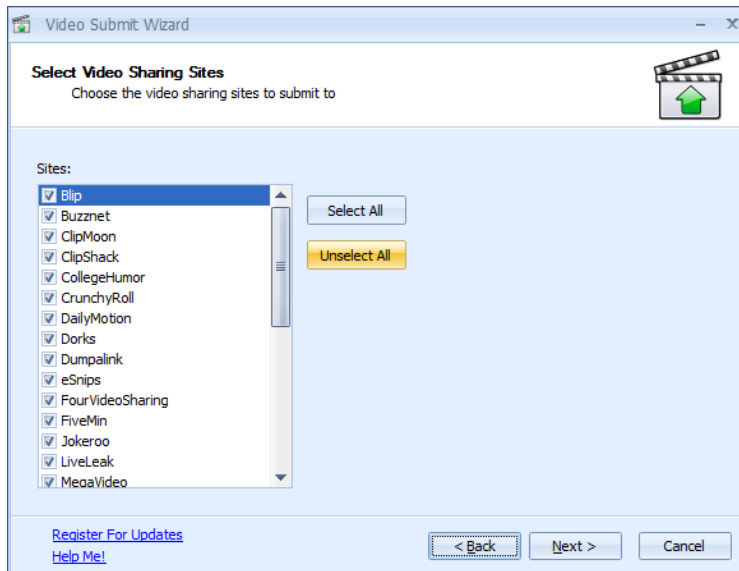
To edit a site's username and password, select it and click "Edit."

To change multiple sites at the same time, hold down CTRL or SHIFT, select the sites, and click "Edit."

**Later in the wizard, if you find that a site doesn't work anymore (the software doesn't submit to it correctly), click "[Report Broken Site](#)" to report it as broken.**

3. On the "Select Video Sharing Sites" step, you'll simply select the video sharing sites that you want to submit to.

Note: sites will be disabled until you enter username and password information for them on the previous step.



- Next, you'll enter details about your video.

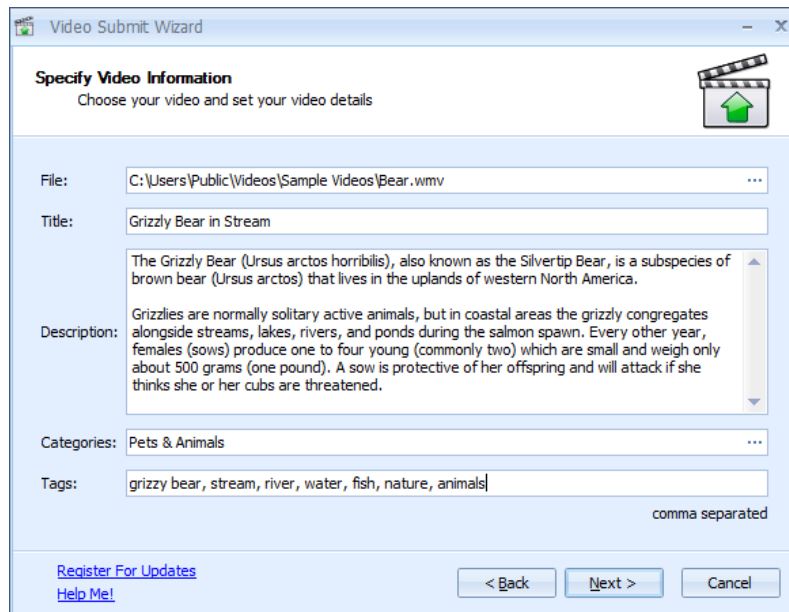
**File** – the location of your video on your computer

**Title** – the title that you want to name your video

**Description** – the details on your video (include your website URL!)

**Categories** – what category your video falls under

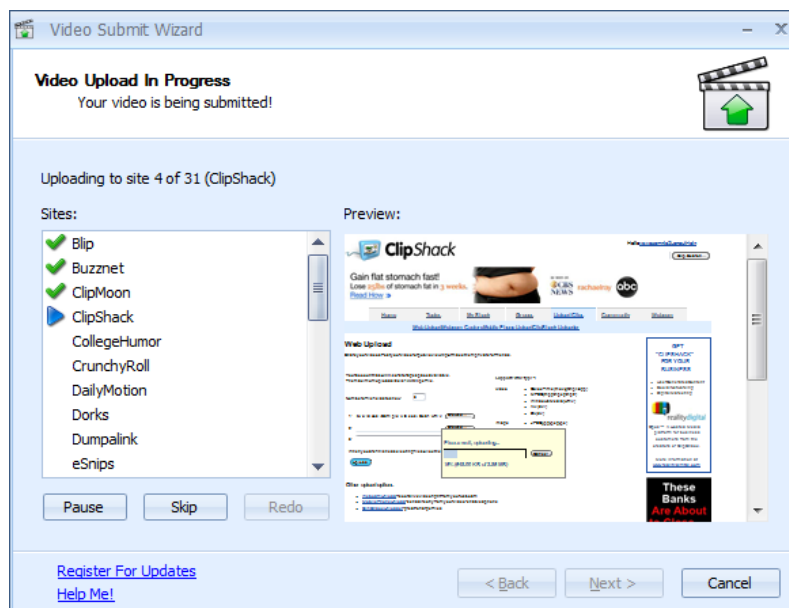
**Tags** – keywords that you want to associate with your video, separated by commas



The screenshot shows the 'Specify Video Information' window of the Video Submit Wizard. The window title is 'Video Submit Wizard'. The main heading is 'Specify Video Information' with the subtitle 'Choose your video and set your video details'. There is a clapperboard icon with a green arrow pointing up. The fields are: File: C:\Users\Public\Videos\Sample Videos\Bear.wmv; Title: Grizzly Bear in Stream; Description: The Grizzly Bear (Ursus arctos horribilis), also known as the Silvertip Bear, is a subspecies of brown bear (Ursus arctos) that lives in the uplands of western North America. Grizzlies are normally solitary active animals, but in coastal areas the grizzly congregates alongside streams, lakes, rivers, and ponds during the salmon spawn. Every other year, females (sows) produce one to four young (commonly two) which are small and weigh only about 500 grams (one pound). A sow is protective of her offspring and will attack if she thinks she or her cubs are threatened.; Categories: Pets & Animals; Tags: grizzly bear, stream, river, water, fish, nature, animals. At the bottom, there are links for 'Register For Updates' and 'Help Me!', and buttons for '< Back', 'Next >', and 'Cancel'.

- Your video will be automatically submitted on the next step!

**IMPORTANT:** Do not minimize Video Submit Wizard or use your computer for other tasks while submitting. Let it complete without interference.



The screenshot shows the 'Video Upload In Progress' window of the Video Submit Wizard. The window title is 'Video Submit Wizard'. The main heading is 'Video Upload In Progress' with the subtitle 'Your video is being submitted!'. There is a clapperboard icon with a green arrow pointing up. The main content area is titled 'Uploading to site 4 of 31 (ClipShack)'. On the left, there is a list of sites with checkboxes: Blip (checked), Buzznet (checked), ClipMoon (checked), ClipShack (checked), CollegeHumor, CrunchyRoll, DailyMotion, Dorks, Dumpalink, and eSnips. On the right, there is a 'Preview' window showing a screenshot of the ClipShack website. At the bottom, there are buttons for 'Pause', 'Skip', and 'Redo', and links for 'Register For Updates' and 'Help Me!', and buttons for '< Back', 'Next >', and 'Cancel'.

# Troubleshooting

1. **“Not many of the sites are submitting correctly for me.”**

You probably have Internet Explorer 8 installed.

Video Submit Wizard is not fully compatible with Internet Explorer 8 yet. Please see the below document on how to uninstall Internet Explorer 8 and revert to your prior version:

<http://support.microsoft.com/kb/957700>

2. **“There are a few sites that are not working or being correctly submitted to.”**

Report any sites that are not working to:

<http://www.videosubmitwizard.com/report/>

I will take a look and get an update out if other users experience the same issues.

3. **“I have a question that’s not listed here.”**

Please open a support ticket at:

<http://support.videosubmitwizard.com>

Thank you,

Keith Gilbert

